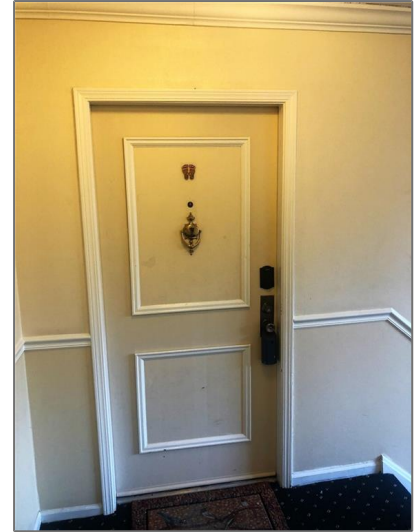


# 6851 Roswell Road # A6

1,206 Sqft - 6851 Roswell Road # A6, Atlanta, Georgia 30328



## Basic Details

Property Type:	<b>Residential</b>
Listing Type:	<b>Sold</b>
Listing ID:	<b>6848688</b>
Price:	<b>\$178,500</b>
Bedrooms:	<b>2</b>
Bathrooms:	<b>2</b>
Square Footage:	<b>1,206 Sqft</b>
Year Built:	<b>1964</b>
Status:	<b>Closed</b>
Property SubType:	<b>Condominium</b>
CloseDate:	<b>07/13/2021</b>

## Features

✓ Heating System:	Central, Forced Air, Natural Gas
✓ Cooling System:	Central Air, Ceiling Fan(s)
✓ View:	City
✓ Patio:	Patio
✓ Parking:	2
✓ Appliances:	Dishwasher, Gas Range, Refrigerator, Gas Oven
✓ Community Features:	Homeowners Assoc, Near Marta, Near Schools, Near Shopping, Pool, Clubhouse, Restaurant, Public Transportation
✓ Electric:	110 Volts, 220 Volts In Laundry
✓ Exterior Features:	Tennis Court(s)
Fireplaces Total:	<b>0</b>
✓ Flooring:	

		Ceramic Tile, Vinyl
✓	Interior Features:	High Speed Internet, Walk-in Closet(s), Double Vanity
✓	Laundry Features:	Laundry Room
✓	Lot Features:	Level
✓	Parking Features:	Unassigned
✓	Roof:	Composition
✓	Bedroom Features:	Master On Main
✓	DiningRoom Features:	Other
✓	MasterBathroom Features:	Double Vanity, Tub/shower Combo
✓	Security Features:	Security Gate, Security Guard
✓	Sewer:	Public Sewer
✓	Utilities:	Cable Available, Electricity Available, Phone Available, Water Available, Natural Gas Available, Sewer Available

## Location [Details](#)

Country:	<b>US</b>
State:	<b>GA</b>
County:	<b>Fulton</b>
City:	<b>Atlanta</b>
Zipcode:	<b>30328</b>
Street:	<b>6851 Roswell Road # A6</b>
Floor Number:	<b>0</b>
Longitude:	<b>W85° 37' 39.8"</b>
Latitude:	<b>N33° 56' 30.7"</b>
Directions:	<b>I-285 exit at Roswell Road. Head</b>

## Additional [Details](#)

Office Name:	<b>Coldwell Banker Realty</b>	
✓	Architectural Style:	European, Chalet
Association Fee:	<b>\$300</b>	
Association Fee Frequency:	<b>Annually</b>	
✓	Association Fee Includes:	Insurance, Maintenance Structure, Pest Control, Reserve Fund, Security, Maintenance Grounds, Swim/tennis
✓	Construction Materials:	Brick Front, Frame
Elementary	<b>Spalding Drive</b>	

**north (OTP) onto Roswell Road. Foxcroft will be on your right approximately 1 mile. From GA 400 - exit 5 to Roswell Road, head right on Roswell Road. Foxcroft on your right approximately 1 mile.**

School:

Middle School: **Ridgeview Charter**

High School: **Riverwood International Charter**

Levels: **Two**

Property Condition: **Resale**

Tax Annual Amount: **\$1,621**

Tax Year: **2020**

Water Source: **Public**

ParcelNumber: **17 007300050068**

UnitNumber: **A6**


ClosePrice: **\$178,500**

Original List Price: **\$195,000**

## Agent Info



Marci Robinson

 404-317-1138

 marci@sandysprings.com