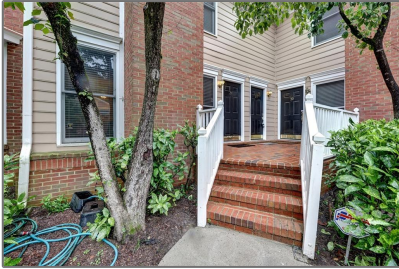


7500 Roswell Road # 28

1,366 Sqft - 7500 Roswell Road # 28, Sandy Springs, Georgia 30350



Basic Details

Property Type:	Residential
Listing Type:	Sold
Listing ID:	6917547
Price:	\$241,919
Bedrooms:	2
Bathrooms:	2
Half Bathrooms:	1
Square Footage:	1,366 Sqft
Year Built:	1986
Status:	Closed
Property SubType:	Condominium
CloseDate:	10/15/2021

Features

✓ Heating System:	Central
✓ Cooling System:	Central Air
✓ View:	Other
✓ Patio:	Front Porch
✓ Parking:	
✓ Appliances:	Dishwasher, Microwave, Refrigerator
✓ Community Features:	Gated, Homeowners Assoc, Near Schools, Near Shopping, Near Trails/greenway, Pool, Park, Public Transportation
✓ Electric:	110 Volts
✓ Exterior Features:	Other
✓ Fireplace Features:	Family Room
Fireplaces Total:	1
✓ Flooring:	Vinyl
✓ Interior Features:	Entrance Foyer
✓ Laundry Features:	Common Area
✓ Lot Features:	Level, Landscaped

✓	Parking Features:	Assigned, Parking Lot
✓	Roof:	Composition
✓	Bedroom Features:	Split Bedroom Plan
✓	DiningRoom Features:	Open Concept, Great Room
✓	MasterBathroom Features:	Tub/shower Combo
✓	Security Features:	Smoke Detector(s), Security Gate, Security Lights
✓	Sewer:	Public Sewer
✓	Utilities:	Cable Available, Electricity Available, Water Available, Natural Gas Available, Sewer Available

Location Details

Country:	US
State:	GA
County:	Fulton
City:	Sandy Springs
Zipcode:	30350
Street:	7500 Roswell Road # 28
Floor Number:	0
Longitude:	W85° 37' 59.9"
Latitude:	N33° 57' 32.9"
Directions:	From I-285 head north on Roswell Road and travel 3.6 miles and the destination will be on the left.

Additional Details

Office Name:	EXP Realty, LLC.	
✓	Architectural Style:	Traditional
Association Fee:	\$325	
Association Fee Frequency:	Monthly	
✓	Association Fee Includes:	Maintenance Structure, Trash, Water, Maintenance Grounds, Swim/tennis
✓	Construction Materials:	Other
Elementary School:	Spalding Drive	
Middle School:	Sandy Springs	
High School:	North Springs	
✓	Levels:	Two
✓	Property Condition:	Resale
Tax Annual Amount:	\$2,465	

Tax Year: **2020**

✓ Water Source: **Public**

ParcelNumber: **17 003200050282**

UnitNumber: **28**

ClosePrice: **\$241,919**

Original List Price: **\$215,000**

Agent Info



Marci Robinson

☎ 404-317-1138

✉ marci@sandysprings.com
