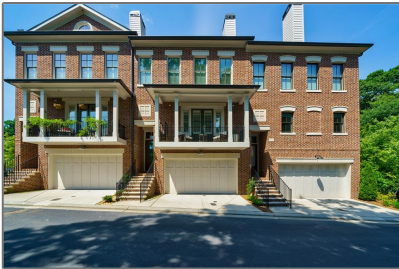


3736 Paige Way NE

2,400 Sqft - 3736 Paige Way NE, Atlanta, Georgia
30319



Basic [Details](#)

Property Type:	Residential
Listing Type:	Sold
Listing ID:	6949443
Price:	\$787,500
Bedrooms:	3
Bathrooms:	3
Half Bathrooms:	1
Square Footage:	2,400 Sqft
Year Built:	2018
Status:	Closed
Property SubType:	Townhouse
CloseDate:	11/08/2021

Features

✓	Heating System:	Forced Air, Natural Gas
✓	Cooling System:	Central Air, Ceiling Fan(s)
✓	Basement:	Daylight, Finished, Finished Bath, Interior Entry, Exterior Entry, Driveway Access
✓	Fence:	Back Yard
✓	View:	Other
✓	Patio:	Patio
✓	Parking:	2
✓	Appliances:	Dishwasher, Disposal, Microwave, Refrigerator, Electric Oven, Gas Cooktop
✓	Community Features:	Homeowners Assoc, Dog Park, Near Marta, Near Schools, Near Shopping
✓	Electric:	220 Volts In Garage
✓	Exterior Features:	Balcony, Private Yard, Courtyard
✓	Fireplace Features:	Gas Starter, Family Room

Fireplaces Total: **1**

✓ Flooring: **Hardwood, Carpet**

Garage Spaces: **2**

✓ Interior Features: **Bookcases, High Ceilings 10 Ft Main, Walk-in Closet(s), High Ceilings 9 Ft Lower, High Ceilings 10 Ft Upper**

✓ Laundry Features: **Upper Level, In Hall**

✓ Lot Features: **Level, Landscaped**

✓ Parking Features: **Garage, Garage Faces Front**

✓ Roof: **Composition**

✓ Bedroom Features: **Other**

✓ DiningRoom Features: **Open Concept**

✓ MasterBathroom Features: **Double Vanity, Shower Only**

✓ Security Features: **Security System Owned**

✓ Sewer: **Public Sewer**

✓ Utilities: **Cable Available, Electricity Available, Phone Available, Water Available, Natural Gas Available, Sewer Available**

Location [Details](#)

Country:	US
State:	GA
County:	Fulton
City:	Atlanta
Zipcode:	30319
Street:	3736 Paige Way NE
Floor Number:	0
Longitude:	W85° 39' 51.3"
Latitude:	N33° 52' 43.8"

Additional [Details](#)

Office Name:	Dorsey Alston Realtors
✓ Architectural Style:	Traditional, Townhouse
Association Fee:	\$485
Association Fee Frequency:	Monthly
✓ Association Fee Includes:	Maintenance Structure, Trash, Water, Maintenance Grounds, Termite
✓ Construction	Brick 4 Sides

Directions:

From Buckhead, take Peachtree north past Phipps Plaza and Peachtree Dunwoody Rd. Turn left onto private street (you'll see the blue sign) called Paige Way, just before you get to Vermont Rd. Unit is 2nd from end. Parking just past unit on left.

Materials:

Elementary School: **Sara Rawson Smith**

Middle School: **Willis A. Sutton**

High School: **North Atlanta**

Levels: **Three Or More**

Property Condition: **Resale**

Road Frontage Type: **Private Road**

Tax Annual Amount: **\$10,545**

Tax Year: **2020**

Water Source: **Public**

ParcelNumber: **17 001000041899**

StreetDirSuffix: **NE**


ClosePrice: **\$787,500**


Original List Price: **\$799,000**

Agent Info



Marci Robinson

 404-317-1138

 marci@sandysprings.com