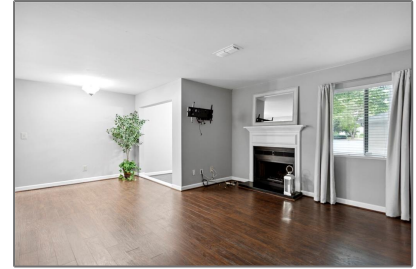
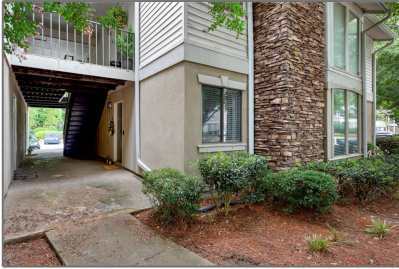


# 9003 Wingate Way

730 Sqft - 9003 Wingate Way, Sandy Springs, Georgia 30350



## Basic Details

Property Type:	<b>Residential</b>
Listing Type:	<b>Sold</b>
Listing ID:	<b>7093197</b>
Price:	<b>\$127,500</b>
Bedrooms:	<b>1</b>
Bathrooms:	<b>1</b>
Square Footage:	<b>730 Sqft</b>
Year Built:	<b>1985</b>
Status:	<b>Closed</b>
Property SubType:	<b>Condominium</b>
CloseDate:	<b>09/08/2022</b>

## Features

✓ Heating System:	Natural Gas
✓ Cooling System:	Central Air, Ceiling Fan(s)
✓ View:	Other
✓ Patio:	Patio, Covered, Enclosed
✓ Parking:	
✓ Accessibility Features:	Accessible Entrance
✓ Appliances:	Dishwasher, Microwave, Refrigerator, Dryer, Electric Range, Washer
✓ Community Features:	Gated, Homeowners Assoc, Dog Park, Fitness Center, Meeting Room, Pool, Tennis Court(s), Clubhouse
✓ Electric:	110 Volts
✓ Exterior Features:	Private Front Entry
✓ Fireplace Features:	Living Room

Fireplaces Total:	<b>1</b>
✓ Flooring:	Hardwood
✓ Interior Features:	High Speed Internet
✓ Laundry Features:	Main Level, Laundry Room
✓ Lot Features:	Level
✓ Parking Features:	Kitchen Level, Parking Lot
✓ Roof:	Composition
✓ Bedroom Features:	Master On Main
✓ DiningRoom Features:	Open Concept
✓ MasterBathroom Features:	Tub/shower Combo
✓ Security Features:	Security Gate
✓ Sewer:	Public Sewer
✓ Utilities:	Cable Available, Electricity Available, Water Available, Natural Gas Available

## Location [Details](#)

Country:	<b>US</b>
State:	<b>GA</b>
County:	<b>Fulton</b>
City:	<b>Sandy Springs</b>
Zipcode:	<b>30350</b>
Street:	<b>9003 Wingate Way</b>
Floor Number:	<b>0</b>
Longitude:	<b>W85° 38' 49.8"</b>
Latitude:	<b>N33° 58' 3.1"</b>
Directions:	<b>GA400 to Exit 6, Northridge Rd. Left(west) on Northridge to left</b>

## Additional [Details](#)

Office Name:	<b>RE/MAX Around Atlanta Realty</b>
✓ Architectural Style:	Traditional, Mid-rise (up To 5 Stories)
Association Fee:	<b>\$260</b>
Association Fee Frequency:	<b>Monthly</b>
✓ Association Fee Includes:	Maintenance Structure, Reserve Fund, Trash, Water, Maintenance Grounds, Sewer, Termite, Swim/tennis
✓ Construction Materials:	Stucco, Frame
Elementary	<b>Woodland - Fulton</b>

of Colquitt. 1/4 mi  
past Pitts Rd  
intersection, turn  
Right into entrance  
"Stonepark". Stay  
straight through  
Gate, 9000 building  
on the left just past  
the mail center.  
You can park to left  
of mail center or  
turn left at next  
street & park  
immediately on left.  
You will see an  
"Exit" with arrow  
small sign.

School:

Middle School: **Sandy Springs**

High School: **North Springs**

✓ Levels: **One**

✓ Property Condition: **Resale**

✓ Road Frontage  
Type: **Private Road**

Tax Annual  
Amount: **\$1,334**

Tax Year: **2021**

✓ Water Source: **Public**

ParcelNumber: **17 002300032075**

ClosePrice: **\$127,500**

Original List  
Price: **\$143,000**

## Agent [Info](#)



Marci Robinson

📞 404-317-1138

✉️ marci@sandysprings.com