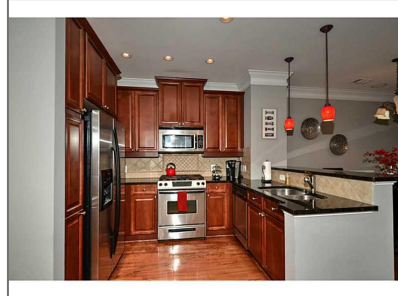
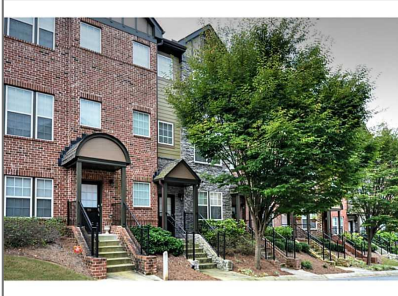


1213 Ashford Creek Park NE # 1213

1,237 Sqft - 1213 Ashford Creek Park NE # 1213,
Atlanta, Georgia 30319



Basic Details

Property Type:	Residential
Listing Type:	Sold
Listing ID:	5345895
Price:	\$216,875
Bedrooms:	1
Bathrooms:	1
Half Bathrooms:	1
Square Footage:	1,237 Sqft
Year Built:	2006
Status:	Closed
Property SubType:	Townhouse
CloseDate:	10/17/2014

Features

✓ Heating System:	Natural Gas
✓ Cooling System:	Zoned, Central Air, Ceiling Fan(s)
✓ Patio:	Patio
✓ Parking:	
✓ Appliances:	Gas Range, Microwave, Gas Water Heater
✓ Community Features:	Gated, Homeowners Assoc, Dog Park, Pool, Clubhouse
✓ Exterior Features:	Balcony, Private Rear Entry
Fireplaces Total:	0
✓ Flooring:	Hardwood
Garage Spaces:	1
✓ Interior Features:	High Speed Internet, High Ceilings 9 Ft Upper, High Ceilings 9 Ft Main
✓ Laundry Features:	Upper Level
✓ Lot Features:	Other
✓ Parking Features:	Garage, Garage Faces

Side

✓ Roof: Composition

✓ Bedroom Features: Oversized Master

✓ MasterBathroom Features: Double Vanity, Separate Tub/shower, Whirlpool Tub, Soaking Tub

✓ Security Features: Security Gate

✓ Utilities: Cable Available

Location Details

Country: US

State: GA

County: Dekalb - GA

City: Atlanta

Zipcode: 30319

Street: 1213 Ashford Creek Park NE # 1213

Floor Number: 0

Longitude: W85° 40' 2"

Latitude: N33° 53' 47"

Directions: From I285 WEST: Take Exit 29 for Ashford Dunwoody, RIGHT onto Ashford Dunwoody Road (South), RIGHT on Lakeside Way, RIGHT on Ashford Creek Drive, LEFT on Ashford Creek Park.

Additional Details

Office Name: KELLER WILLIAMS RLTY, FIRST ATLANTA

✓ Architectural Style: Traditional, Townhouse

Association Fee: \$141

Association Fee Frequency: Monthly

✓ Construction Materials: Cement Siding

Elementary School: Montgomery

Middle School: Chamblee

High School: Chamblee Charter

✓ Levels: Multi/split

✓ Property Condition: Resale

Tax Annual Amount: \$2,867

Tax Year: 2013

ParcelNumber: 1213AshfordCreek1 213PARKNE

StreetDirSuffix: NE

UnitNumber: 1213

ClosePrice: \$216,875

Original List \$225,000

Price:

Agent [Info](#)



Marci Robinson

📞 404-317-1138

✉️ marci@sandysprings.com
