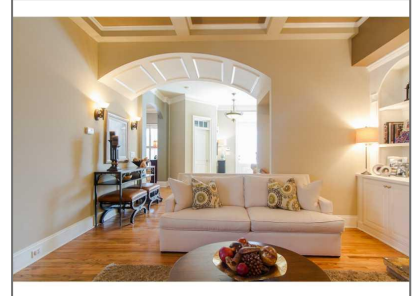
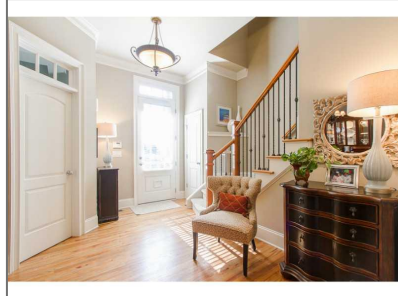
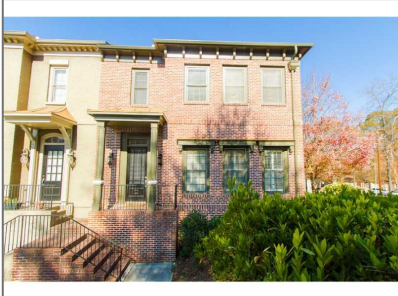


1483 Village Park Court NE # 1483

3,104 Sqft - 1483 Village Park Court NE # 1483,
Brookhaven, Georgia 30319



Basic Details

Property Type: **Residential**

Listing Type: **Sold**

Listing ID: **5369761**

Price: **\$500,000**

Bedrooms: **4**

Bathrooms: **3**

Half Bathrooms: **1**

Square Footage: **3,104 Sqft**

Year Built: **2001**

Status: **Closed**

Property SubType: **Townhouse**

CloseDate: **04/23/2015**

Features

✓ Heating System: **Zoned, Forced Air, Natural Gas**

✓ Cooling System: **Zoned, Central Air**

✓ Basement: **Full, Daylight, Finished, Interior Entry, Bath/stubbed**

✓ View: **Other**

✓ Parking

✓ Appliances: **Dishwasher, Disposal, Gas Range, Microwave, Refrigerator, Self Cleaning Oven, Gas Water Heater**

✓ Community Features: **Homeowners Assoc, Near Marta, Near Shopping, Playground, Restaurant, Public Transportation**

✓ Exterior Features: **Private Front Entry, Private Rear Entry**

✓ Fireplace Features: **Gas Log, Gas Starter, Living Room, Factory Built**

Fireplaces Total: **1**

✓ Flooring: **Hardwood**

Garage Spaces:	1
✓ Interior Features:	Bookcases, Entrance Foyer, High Ceilings 10 Ft Main, High Speed Internet, Walk-in Closet(s), Double Vanity, High Ceilings 9 Ft Lower, Tray Ceiling(s), Low Flow Plumbing Fixtures, High Ceilings 10 Ft Upper
✓ Laundry Features:	Upper Level, Laundry Room
✓ Lot Features:	Landscaped
✓ Parking Features:	Assigned, Garage, Garage Door Opener, Detached
✓ Roof:	Composition
✓ Bedroom Features:	Other
✓ DiningRoom Features:	Separate Dining Room
✓ MasterBathroom Features:	Double Vanity, Separate Tub/shower
✓ Security Features:	Fire Alarm, Security System Owned, Smoke Detector(s), Open Access
✓ Utilities:	Cable Available, Underground Utilities

Location Details

Country:	US
State:	GA
County:	Dekalb - GA
City:	Brookhaven
Zipcode:	30319
Street:	1483 Village Park Court NE # 1483
Floor Number:	0
Longitude:	W85° 40' 16.9"
Latitude:	N33° 51' 38.9"

Additional Details

Office Name:	DORSEY ALSTON REALTORS
✓ Architectural Style:	Traditional, Townhouse
Association Fee:	\$244
Association Fee Frequency:	Monthly
✓ Association Fee Includes:	Insurance, Maintenance Structure, Water, Maintenance Grounds, Termite
✓ Construction Materials:	Brick 4 Sides

Directions:

**Peachtree Road to
Dresden Drive to
Right on Village
Park Court. At stop
sign go Left and
unit is at the end
#1483.**

Elementary
School:

Ashford Park

Middle School:

Chamblee

High School:

Chamblee Charter



Levels:

[Multi/split](#)



Other Equipment:

[Irrigation Equipment](#)



Property Condition:

[Resale](#)

Tax Annual
Amount:

\$3,836

Tax Year:

2013

ParcelNumber:

**1483VillagePark14
83CTNE**

StreetDirSuffix:

NE

UnitNumber:

1483

ClosePrice:

\$500,000


Original List
Price:

\$529,000

Agent Info



Marci Robinson

 404-317-1138

 marci@sandysprings.com