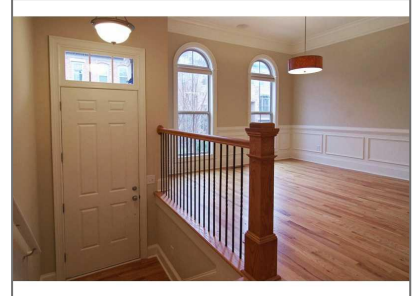


# 2493 Crescent Park Court

## # 850

2,099 Sqft - 2493 Crescent Park Court # 850,  
Atlanta, Georgia 30339



### Basic Details

Property Type:	<b>Residential</b>
Listing Type:	<b>Sold</b>
Listing ID:	<b>5377449</b>
Price:	<b>\$302,000</b>
Bedrooms:	<b>3</b>
Bathrooms:	<b>3</b>
Half Bathrooms:	<b>1</b>
Square Footage:	<b>2,099 Sqft</b>
Year Built:	<b>2007</b>
Status:	<b>Closed</b>
Property SubType:	<b>Townhouse</b>
CloseDate:	<b>03/13/2015</b>

### Features

✓ Heating System:	Central, Zoned, Forced Air, Natural Gas
✓ Cooling System:	Zoned, Central Air
✓ Basement:	Daylight, Finished, Bath/stubbed
✓ View:	City
✓ Patio:	Deck
✓ Parking:	2
✓ Appliances:	Dishwasher, Disposal, Gas Range, Microwave, Refrigerator, Self Cleaning Oven
✓ Community Features:	Homeowners Assoc, Dog Park, Near Shopping, Pool
✓ Exterior Features:	Private Front Entry, Balcony, Gas Grill
✓ Fireplace Features:	Gas Log, Factory Built, Family Room
Fireplaces Total:	<b>1</b>
✓ Flooring:	Hardwood, Carpet

Garage Spaces:

2

✓ Interior Features:	Entrance Foyer, High Ceilings 10 Ft Main, High Speed Internet, Walk-in Closet(s), Double Vanity, Entrance Foyer 2 Story, Disappearing Attic Stairs
✓ Laundry Features:	Upper Level, Laundry Room
✓ Lot Features:	Landscaped
✓ Parking Features:	Attached, Garage, Garage Door Opener, Garage Faces Side
✓ Roof:	Composition
✓ Bedroom Features:	Split Bedroom Plan
✓ DiningRoom Features:	Separate Dining Room
✓ MasterBathroom Features:	Double Vanity, Separate Tub/shower, Soaking Tub, Vaulted Ceiling(s)
✓ Security Features:	Fire Alarm, Security System Owned, Smoke Detector(s), Open Access
✓ Utilities:	Cable Available, Underground Utilities

## Location Details

Country:	US
State:	GA
County:	Cobb
City:	Atlanta
Zipcode:	30339
Street:	2493 Crescent Park Court # 850
Floor Number:	0
Longitude:	W85° 31' 43.6"
Latitude:	N33° 53' 35"

## Additional Details

Office Name:	<b>Berkshire Hathaway HomeServices Georgia Properties</b>
✓ Architectural Style:	Traditional, Townhouse
Association Fee:	<b>\$200</b>
Association Fee Frequency:	<b>Monthly</b>
✓ Association Fee Includes:	Maintenance Structure, Trash, Maintenance Grounds
✓ Construction Materials:	Brick 4 Sides, Other

Directions:

**I-75 to Windy Hill,  
go west to left on  
Circle 75 Pkwy. Rt  
@ Herodian Way,  
left @ Crescent  
Pkwy, Rt @  
Crescent Park Ln,  
Left @ Crescent  
Park Ct or I285 to  
Cobb Pkwy, Rt @  
Herodian.**

Elementary  
School:

**Brumby**

Middle School:

**East Cobb**

High School:

**Wheeler**

Levels:

**Multi/split**

Property Condition:

**Resale**

Tax Annual  
Amount:

**\$2,929**

Tax Year:

**2014**

ParcelNumber:

**2493CrescentPark8  
50CT**

UnitNumber:

**850**

ClosePrice:

**\$302,000**


Original List  
Price:


**\$319,000**

## Agent Info



Marci Robinson

 404-317-1138

 marci@sandysprings.com