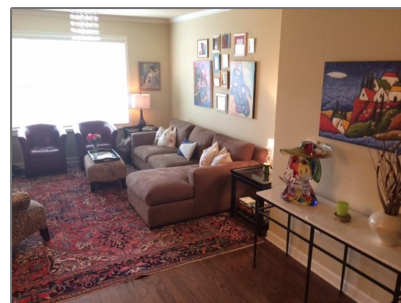


7265 Glisten Avenue NE # 127

1,267 Sqft - 7265 Glisten Avenue NE # 127, Sandy Springs, Georgia 30328



Basic Details

Property Type: **Residential**

Listing Type: **Sold**

Listing ID: **5501011**

Price: **\$181,000**

Bedrooms: **2**

Bathrooms: **2**

Square Footage: **1,267 Sqft**

Year Built: **2012**

Status: **Closed**

Property SubType: **Condominium**

CloseDate: **04/30/2015**

Features

✓ Heating System: **Electric**

✓ Cooling System: **Central Air**

✓ Patio: **Covered, Enclosed**

✓ Parking

✓ Accessibility Features: **Accessible Entrance, Accessible Elevator Installed, Accessible Hallway(s), Accessible Doors, Grip-accessible Features**

✓ Appliances: **Dishwasher, Disposal, Microwave, Refrigerator, Self Cleaning Oven, Electric Range**

✓ Community Features: **Homeowners Assoc, Fitness Center, Near Marta, Near Schools, Near Shopping, Pool, Clubhouse, Public Transportation**

✓ Exterior Features: **Storage, Balcony**

Fireplaces Total: **0**

✓ Flooring: **Hardwood, Carpet**

✓ Interior Features: **Entrance Foyer, High Speed Internet, Walk-in**

Closet(s), Double Vanity,
Elevator, High Ceilings 9
Ft Main

✓ Laundry Features: Main Level, In Hall

✓ Lot Features: Landscaped

✓ Parking Features: Assigned, Underground

✓ Roof: Composition

✓ Bedroom Features: Master On Main,
Roommate Floor Plan

✓ DiningRoom
Features: Dining L

✓ MasterBathroom
Features: Separate Tub/shower

✓ Security Features: Fire Alarm, Smoke
Detector(s), Security
Gate, Fire Sprinkler
System, Key Card Entry,
Intercom

✓ Utilities: Underground Utilities

Location Details

Country: US

State: GA

County: Fulton

City: Sandy Springs

Zipcode: 30328

Street: 7265 Glisten
Avenue NE # 127

Floor Number: 0

Longitude: W85° 38' 3.1"

Latitude: N33° 57' 9.4"

Directions: From I-285 take
Roswell Road North
to Sandy Springs (3
Miles). The
Highlands will be
on your right. The
first building that

Additional Details

Office Name: **SOLID SOURCE
REALTY GA LLC**

✓ Architectural Style: Traditional, Mid-rise (up
To 5 Stories)

Association Fee: **\$310**

Association Fee
Frequency: **Monthly**

✓ Association Fee
Includes: Electricity, Insurance,
Maintenance Structure,
Reserve Fund, Trash,
Water, Maintenance
Grounds, Termite

✓ Construction
Materials: Other

Elementary
School: **Woodland - Fulton**

Middle School: **Sandy Springs**

High School: **North Springs**

you encounter after the gate is 7265. Go just past and turn right, find a parking place and the entrance is at ground floor center of the building. Call Tenant on cell.

✓ Levels:	One
✓ Property Condition:	Resale
Tax Annual Amount:	\$1,817
Tax Year:	2014
StreetDirSuffix:	NE
UnitNumber:	127
ClosePrice:	\$181,000
Original List Price:	\$179,000

Agent Info



Marci Robinson

📞 404-317-1138

✉ marci@sandysprings.com
